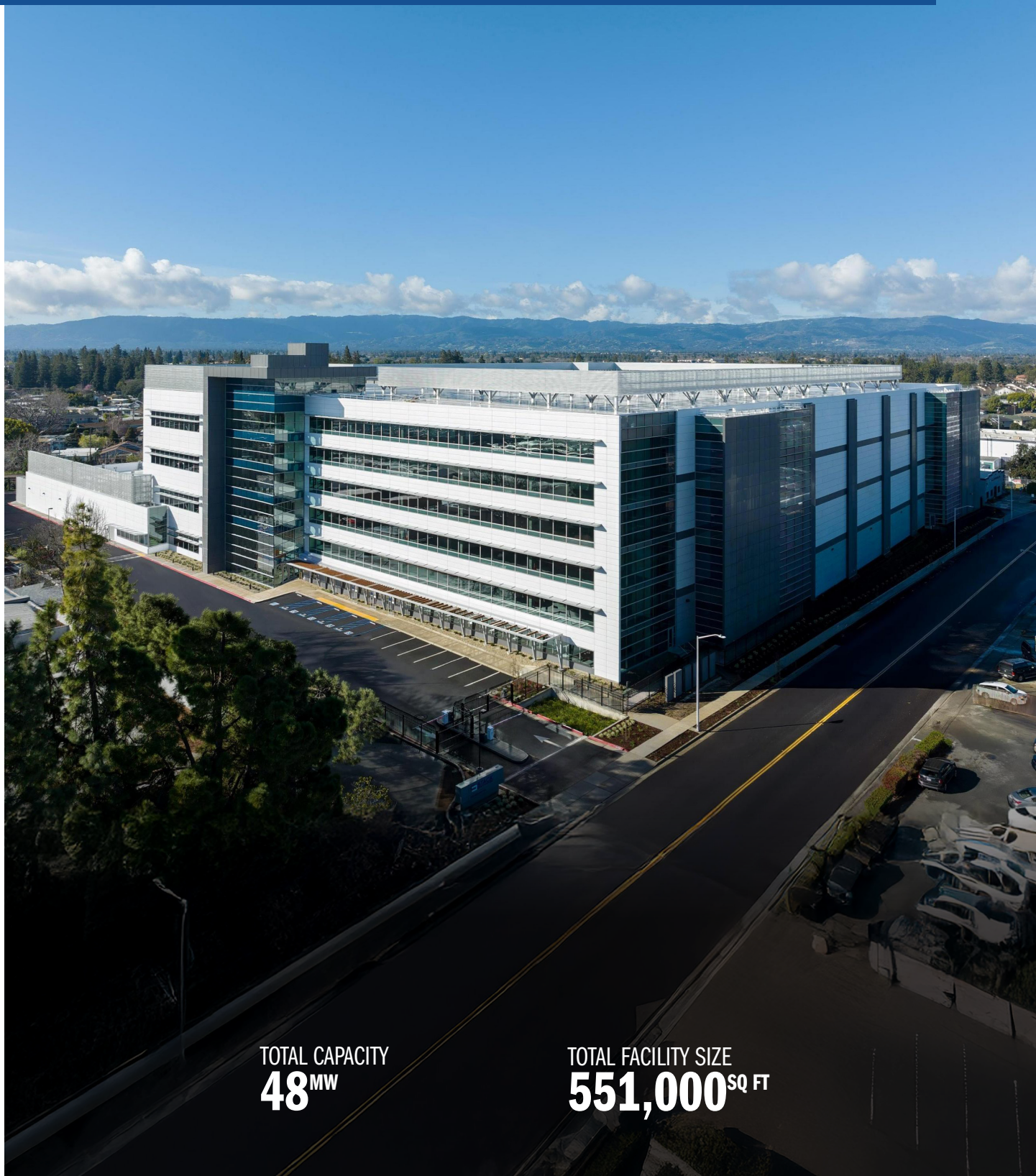




SVY02A | SILICON VALLEY

48MW of Flexible Capacity in the Center of Innovation

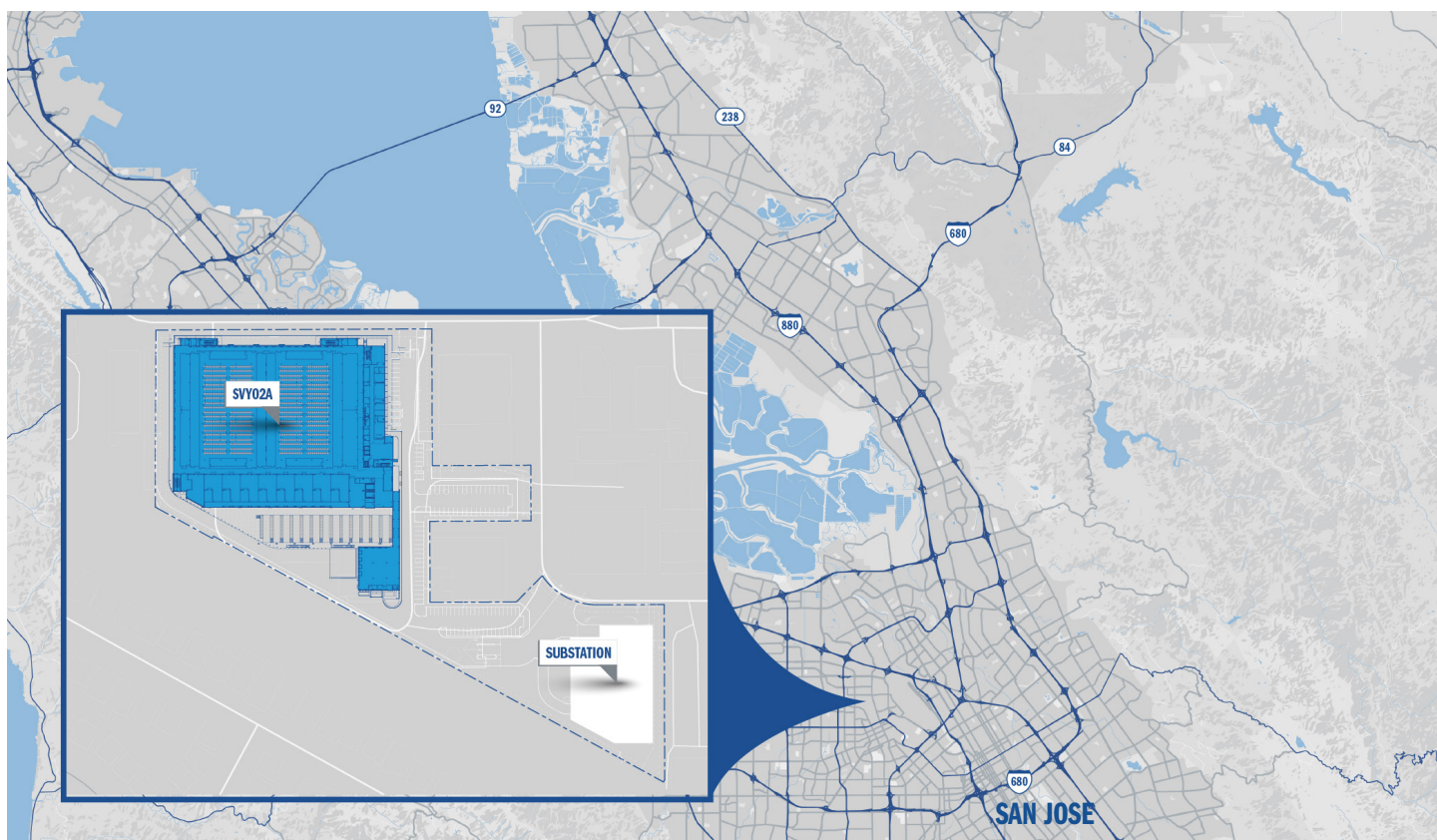


TOTAL CAPACITY
48^{MW}

TOTAL FACILITY SIZE
551,000^{SQ FT}

GENERAL OVERVIEW

Home to many of the world's most innovative companies, Silicon Valley remains one of the most strategic and capacity-constrained markets globally. STACK's 48MW SVY02A facility offers a rare opportunity to scale in the heart of this high-demand region. Engineered for the next wave of digital innovation, the facility is optimized to support AI/ML and cloud deployments. Power will be delivered via a dedicated on-site substation, with 12MW of critical capacity available for immediate lease. , the site supports phased expansion up to its full 48MW capacity, offering a future-ready solution for enterprises with growing AI, ML, and cloud infrastructure needs.



Flexible Capacity for AI and Cloud Growth: Future expansion and reserve capacity options are available up to 48MW. An initial 6MW of critical capacity is planned for deployment upon commitment, with an additional 6MW scheduled to follow. The facility is designed to accommodate both single-tenant and multi-tenant configurations, with dedicated office and storage space available.



Scalable Power: Access to an on-site substation and committed power through Silicon Valley Power (SVP) for initial 12MW.



High-Density Advanced Cooling Capabilities: Grow your digital infrastructure in the heart of a global center for high technology where innovation is plentiful and capacity is scarce.



Sustainability Growth: Powered by 100% renewable energy to help support clients' sustainability targets and corporate responsibility goals.

Facility Overview

- 48MW Capacity
- 9 Acres
- 551,216 SQ FT / 4 stories of data halls
- 8 data halls, each 6MW and 24,000 SQ FT
- Single & multi-tenant shell options

Power & Reliability

- Dual utility feeds with N+1 block redundancy (generators/UPS)
- Minimum 24-hour fuel storage for continuous operation
- Client-dedicated PDU distribution with BMS portal access

High-Density Flexibility

- Proprietary design can support multiple cooling deployments, including liquid to chip
- Closed-loop water cooling systems provide optimal cooling for high-density workloads
- N+1 345-ton air-cooled chillers with quick restart

Fire Protection

- Dual smoke detection including VESDA
- Dual-interlock pre-action sprinkler system
- Located in a FEMA-designated area of minimal flood hazard

Security

- 24/7 on-site security with dual-factor biometric access
- Comprehensive CCTV coverage with 93-day retention
- Secure perimeter with gated vehicle access

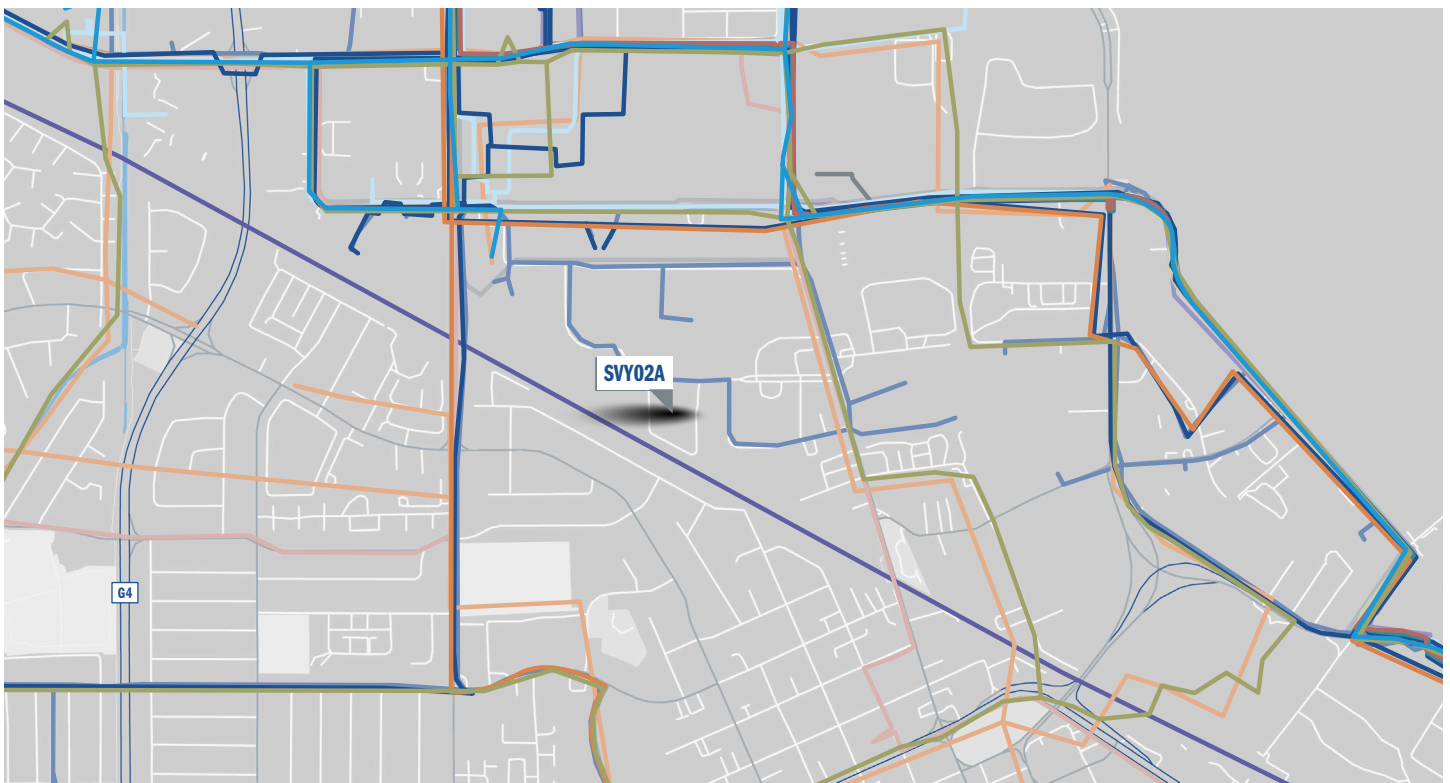
Amenities

- 63,000 SQ FT office space (6 stories), 24,250 SQ FT storage
- EV charging, showers, bike storage, secure loading dock
- Conference rooms, complimentary WiFi, and shared office space

Connectivity

- Up to 4 Main Distribution Frames (MDFs) with diverse fiber entrances for redundancy

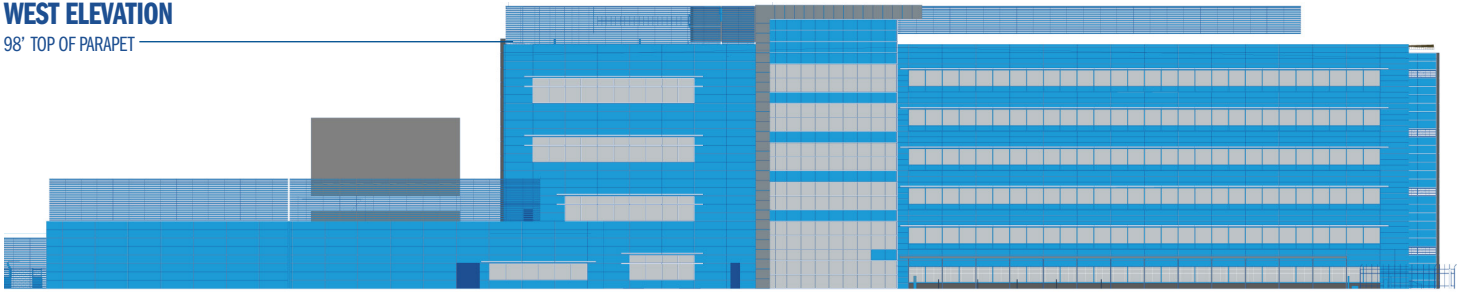
Certifications Supported



ADDITIONAL INFORMATION

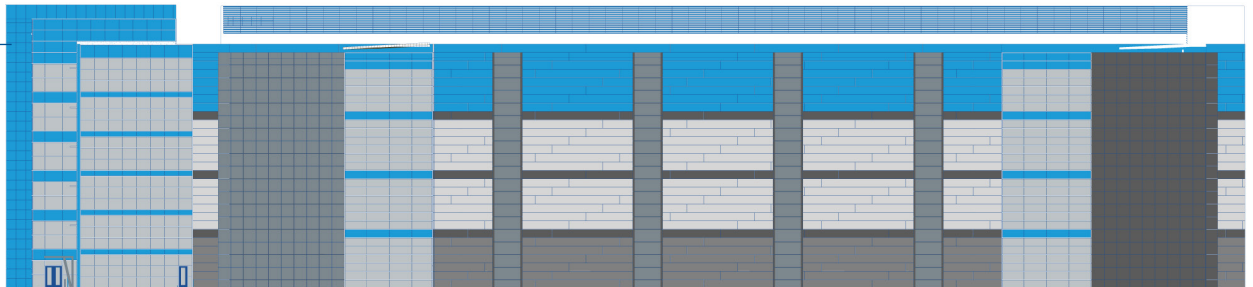
WEST ELEVATION

98' TOP OF PARAPET



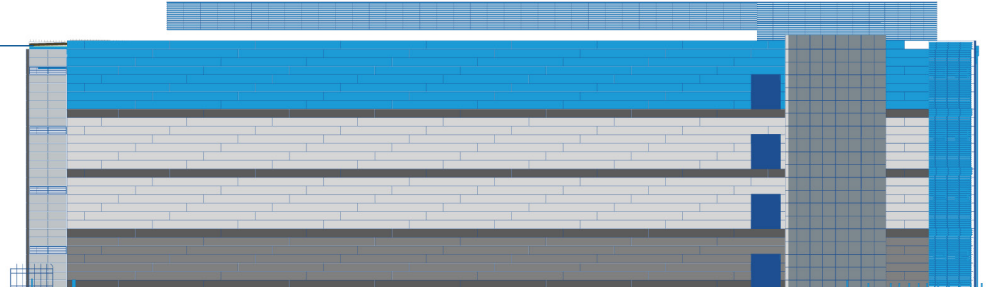
SOUTH ELEVATION

98' TOP OF PARAPET



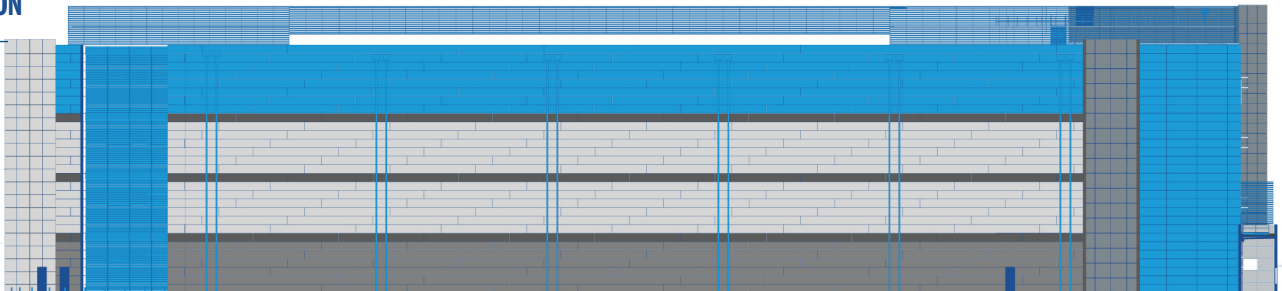
EAST ELEVATION

98' TOP OF PARAPET



NORTH ELEVATION

98' TOP OF PARAPET



STACK is a proven, trusted partner for the world's most innovative companies, designing, developing, and operating sustainable global digital infrastructure. Backed by an unmatched record of reliable delivery and development expertise, STACK brings speed, scale, certainty, and responsibility to the demands of a rapidly evolving digital infrastructure landscape.