



Seoul, Korea

ICN01A

Critical Capacity in One of the World's Most Digitally Connected Cities

CAPACITY

48^{MW}

CAMPUS SIZE

1.1 HECTARES



The world runs on data. Data runs on STACK. | sales@stackinfra.com

Expand Reach in a Top 10 MSA

Korea's economy ranks among the top 10 countries by nominal GDP in the world, and its capital city, Seoul, ranks among the top 10 largest metropolitan areas by population. Korea is a prime location for hyperscale and large enterprise companies wanting to expand their digital infrastructure. Korea's expanding data center market is expected to grow at a CAGR of 6.71% between 2022 and 2027. The time to capitalize on critical capacity in this Northeast Asian economic zone is now.

Located in Incheon, a western suburb of Seoul, STACK's 48MW data center brings scalability to this growing market. The facility offers reliability with robust network connectivity and access to power, supplied by KEPCO. In alignment with government sustainability targets, the single building will incorporate the latest environmentally friendly design supporting industry-leading PUE and building standards.

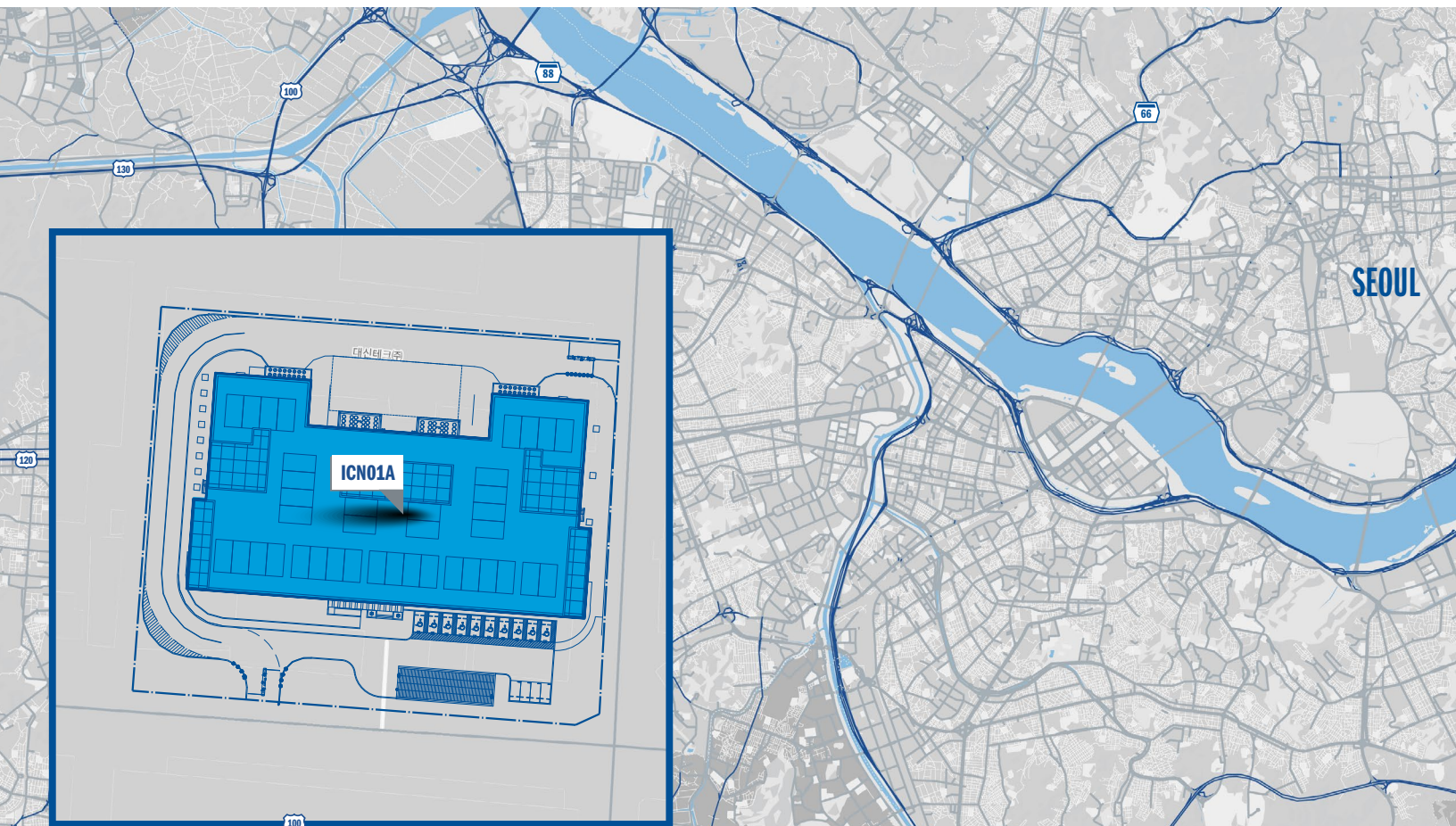
Prime Location: Reach Seoul's 26 million people and nearly 50% of the total population of Korea, which achieves an annual gross domestic product of over USD 1 trillion.

Substantial Scalability: Scale for the future and the ever-increasing demand for more data processing and storage with access to 48MW of critical capacity.

Flexible Options: Choose from READystack capacity for immediate availability, POWERSTACK shell deployments for optimal control, and HYPERSTACK build-to-suit for ultimate flexibility.

Comprehensive Connectivity: Capitalize on immediate proximity to major long haul fiber carriers and high-capacity dark fiber for low-latency connectivity.

Future-Proof Design: Implement higher rack density and floor loading specifications with our scalable design, reflecting the evolving requirements in Korea and Asia Pacific more broadly.



Scale your presence in one of the world's largest cities.

OPTIONS AVAILABLE

HYPER STACK

BUILD-TO-SUIT

Built to scale.

Our HYPERSTACK build-to-suit option gives you total flexibility and control. Choose our purpose-built Basis of Design as a starting point, or work with the STACK team to develop a customized solution for your company to grow as fast as you need.

POWER STACK

POWERED SHELL

A flexible foundation.

POWERSTACK powered shell solutions are customizable base buildings designed for rapid deployments of right-sized capacity on demand. They're fiber-provisioned, fit-out ready, and available fast.

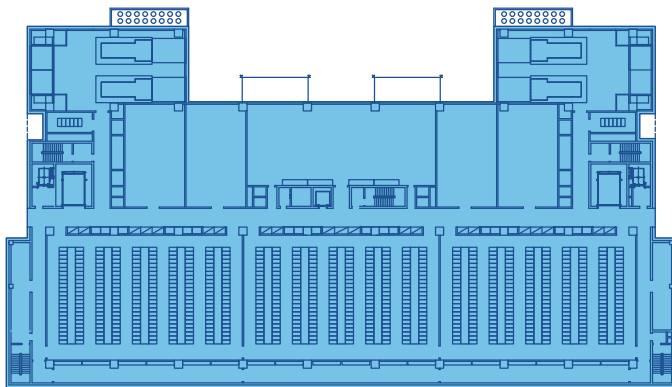
READY STACK

COMMISSIONED CAPACITY

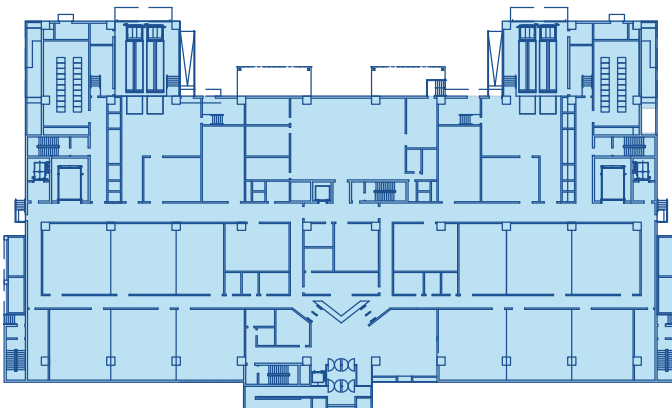
Plug in and go.

When you need capacity even faster, you need READYSTACK. These rack-ready data halls are purpose built for your immediate needs with pre-installed racks, connectivity and power. You bring the equipment. We've got everything else.

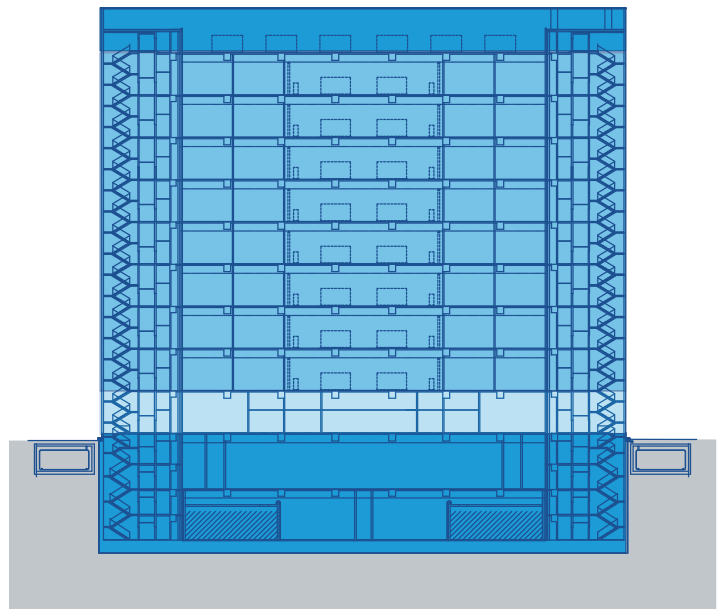
TYPICAL FLOOR (2-9)

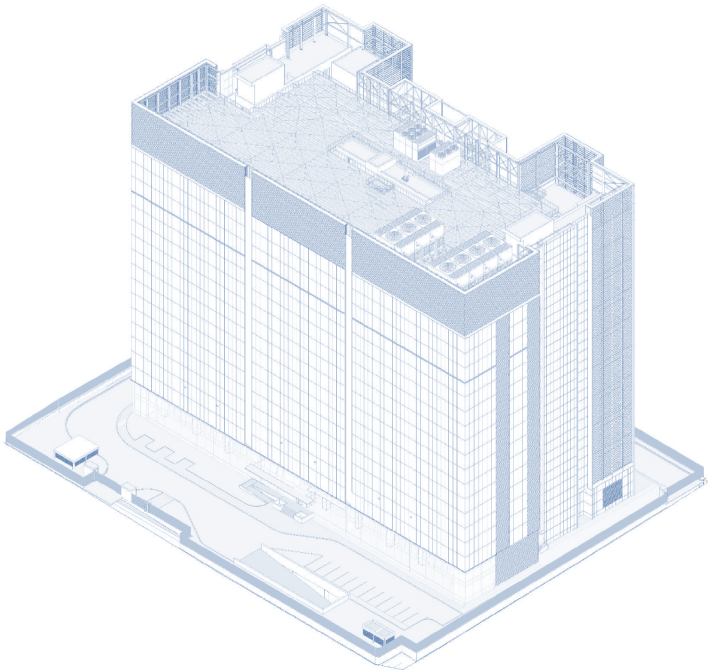
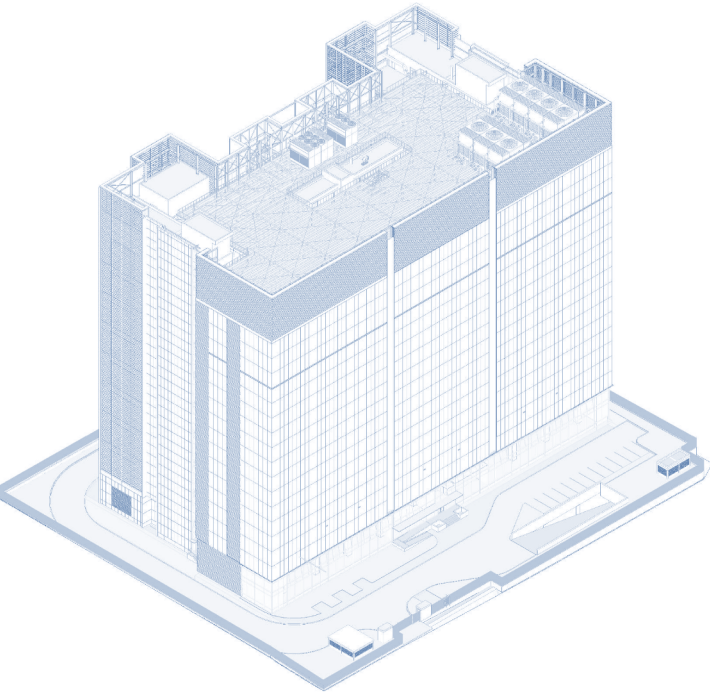
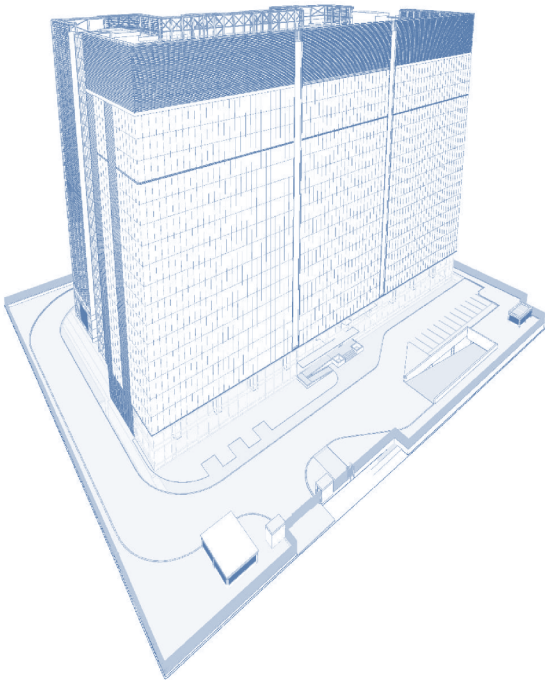
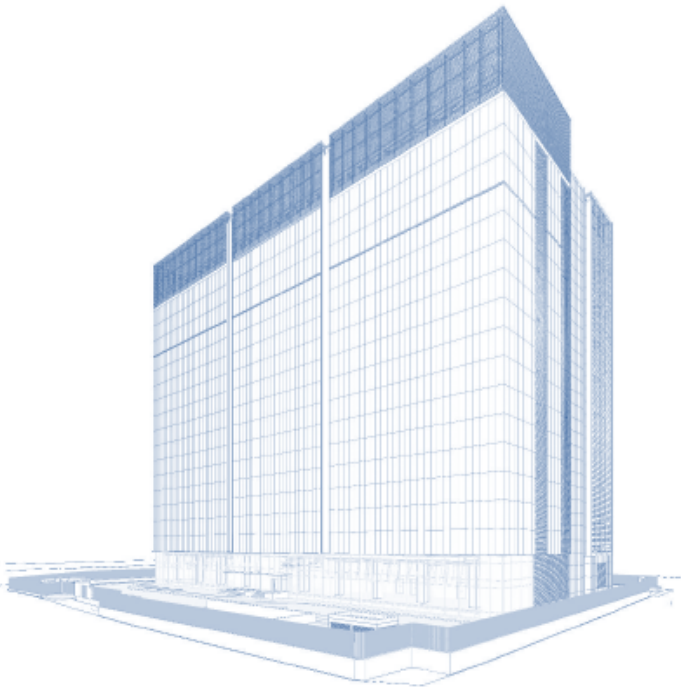


FIRST FLOOR



ELEVATION





CAPACITY

Campus Size

- 1.1 hectares (2.7 acres)

Total Capacity

- 48MW Total Capacity

Deployments

- POWERSTACK™: Immediately available shell capacity
- READYSTACK™: RackReady® data halls
- HYPERSTACK™: Build-to-suit

POWER & RELIABILITY

KEPCO

- 154kV

Electrical Redundancy (Generators / UPS)

- N+1 Block Redundant

Fuel Storage

- 48 hours of bulk fuel storage

PDU

- Dedicated Client PDU / RPP distribution

BMS Controls

- Client access to BMS/EPMS portal available

CONNECTIVITY

Diversity

- 2 Meet-Me-Rooms at ground floor, spatial flexibility to accommodate additional Meet-Me-Rooms

Carrier Availability

- Carrier neutral
- Immediate proximity to major dark fiber carriers: KT Corporation, SK Telecom & LGU+

COOLING & EFFICIENCY

Cooling

- N+1 or N+2 water-cooled chillers

Floor Loading

- 23kN/m²; able to accommodate 5000lb racks

Water Storage

- 48 hours of bulk water storage

Annualized PUE target <1.3

SAFETY & SECURITY

Security

- 24 x 7 on-site security personnel
- Dual-factor biometric access
- CCTV coverage with 93-day retention
- Secure vehicle gates with badge access
- Perimeter fencing
- Tenant specific security
- Separate access to tenant cargo and passenger lifts
- Mantraps

Fire Protection

- Dual smoke detection including VESDA
- Clean Agent Gas fire suppression in Data Halls and Electrical Rooms

CERTIFICATIONS SUPPORTED

- ISO Compliance
- ISO 9001
- ISO 14001
- ISO 27001
- ISO 45001
- PCI/DSS
- SSAE SOC 2 Type I and II

AMENITIES

Work Space

- Conference and break rooms
- Complimentary WiFi
- Shared and dedicated office space

Storage

- Shared and private storage/staging

Client Conveniences

- Access to rail
- Complimentary Wi-Fi
- Showers
- Bicycle storage
- Vehicle Parking
- Restaurants and shops nearby

STACK provides digital infrastructure to scale the world's most innovative companies. With a client-first approach, STACK delivers a comprehensive suite of campus, build-to-suit, colocation, and powered shell solutions in the Americas, EMEA and APAC regions. With robust existing and flexible expansion capacity in the leading availability zones, STACK offers the scale and geographic reach that rapidly growing hyperscale and enterprise companies need. The world runs on data. And data runs on STACK.