



Steps from the World's Innovators in this Coveted Critical Market

TOTAL CAPACITY

**48<sup>MW</sup>**

FACILITY SIZE

**560,440<sup>SQ FT</sup>**

STORIES

**6**



The world runs on data. Data runs on STACK. | [sales@stackinfra.com](mailto:sales@stackinfra.com)

## Expand from within the Center of U.S. Innovation

Headquarters to dozens of the Fortune 500 companies, Silicon Valley is ideally situated for both innovators and their consumers. Its prime location has established Silicon Valley as the second largest data center market in the U.S. as well as the most constrained data center market in North America. The 2022 vacancy rate of Silicon Valley is 1.6%, according to CBRE, but hyperscale, cloud, and enterprise clients can capitalize on essential digital infrastructure real estate with STACK's 48MW data center.

SVY04, formerly the headquarters location of technology pioneers Memorex, sets the stage for future innovators. Situated in the heart of Silicon Valley and only minutes from San Jose International Airport, the building features a private 90MVA substation from Silicon Valley Power to supply robust power. The world's most innovative companies can select from powered shell or commissioned capacity deployments for fast flexibility in one of the most sought-after data center markets nationwide.

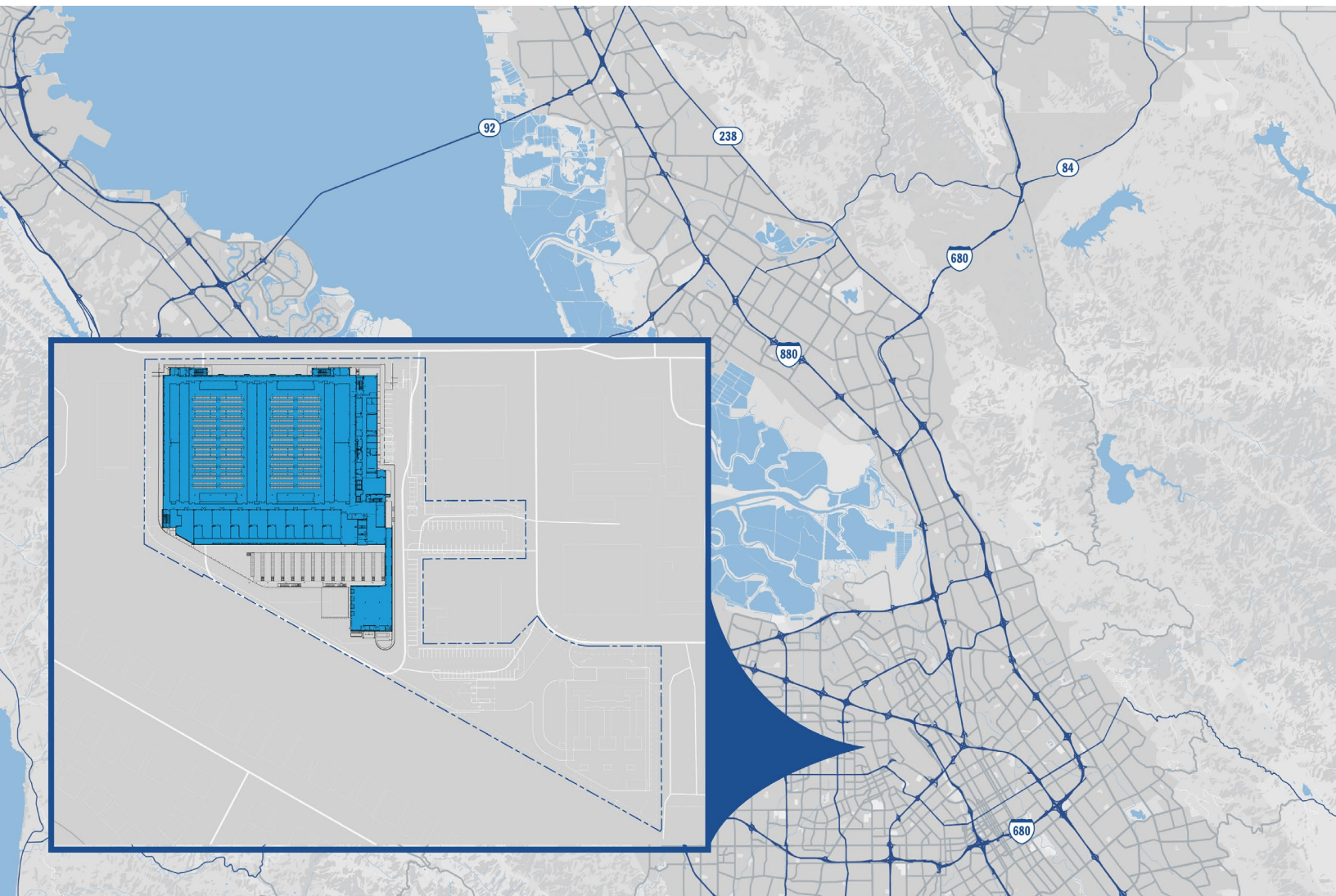
**Central Location:** Grow your digital infrastructure in the heart of a global center for high technology where innovation is plentiful and capacity is scarce.

**Low Latency:** Reach consumers in a top 10 metropolitan statistical area (MSA) by population and gross domestic product (GDP) with fast, diverse connectivity.

**Right-Sized Capacity:** Choose from READystack capacity for immediate availability or POWERSTACK shell deployments for optimal control.

**Robust Power:** Access a dedicated on-site 90MVA substation for reliable, redundant power to run your business with peace of mind.

**Sustainability Focus:** Powered by 100% renewable energy to help support clients' sustainability targets and corporate responsibility goals.





## Scale for the future where it matters most.

OPTIONS AVAILABLE

### POWER STACK POWERED SHELL

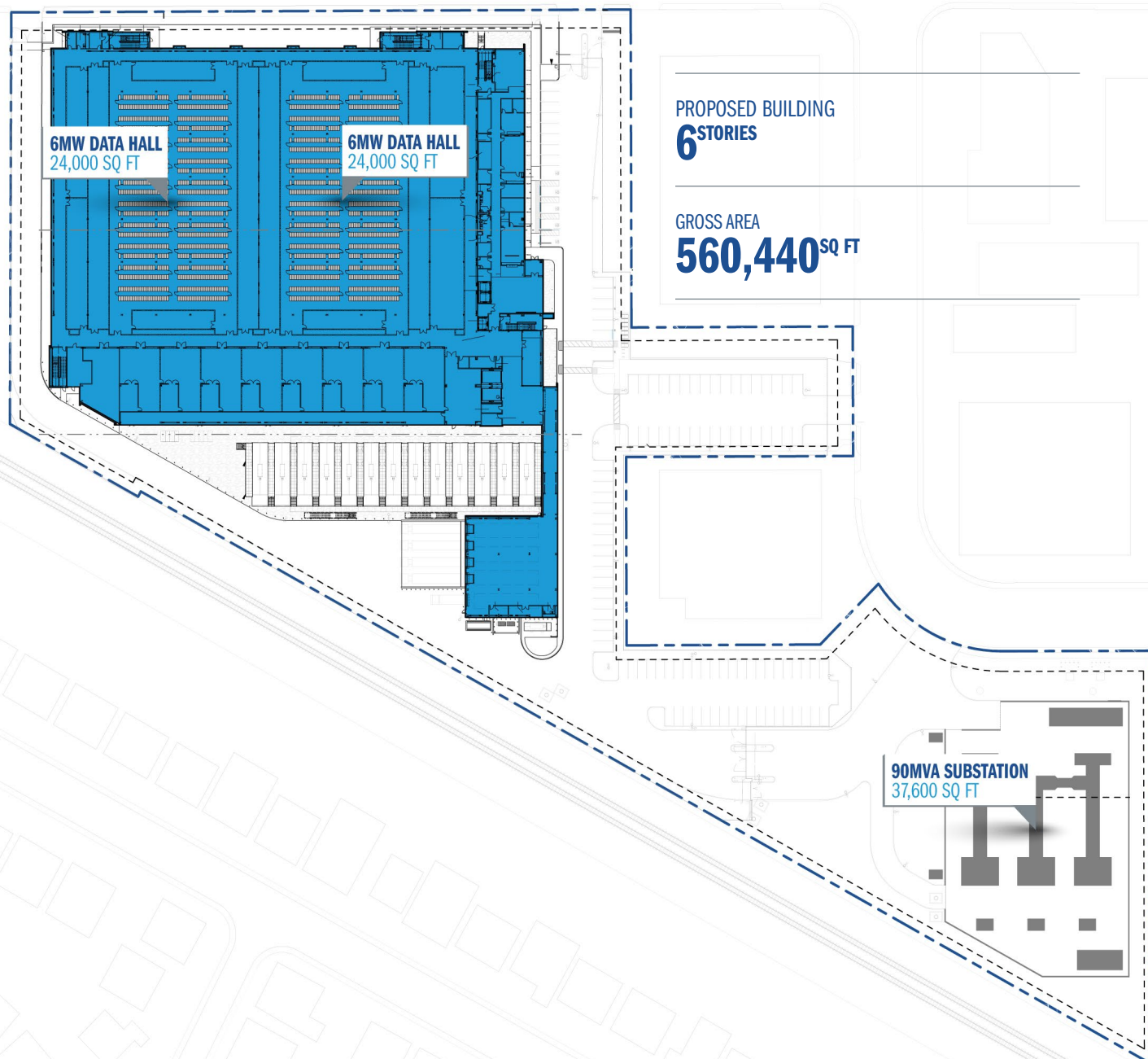
#### A flexible foundation.

Power STACK powered shell solutions are customizable base buildings designed for rapid deployments of right-sized capacity on demand. They're fiber-provisioned, fit-out ready, and available fast.

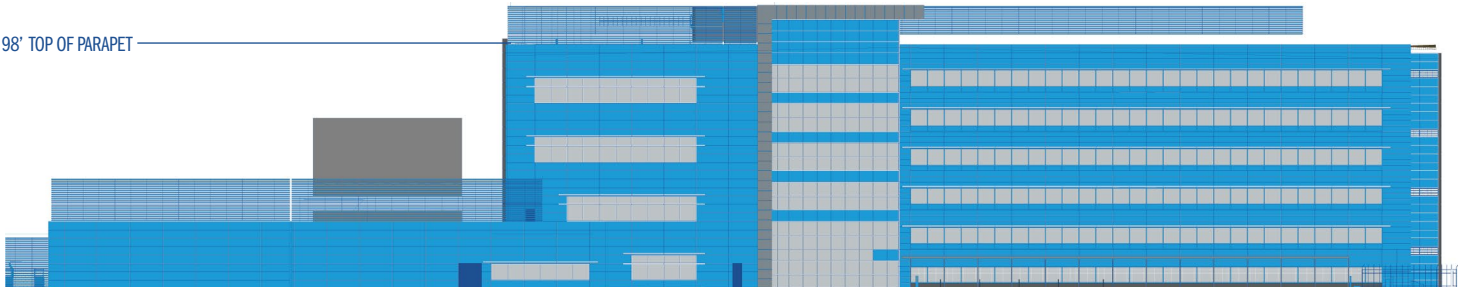
### READY STACK COMMISSIONED CAPACITY

#### Plug in and go.

When you need capacity even faster, you need Ready STACK. These rack-ready data halls are purpose built for your immediate needs with pre-installed racks, connectivity and power. You bring the equipment. We've got everything else.



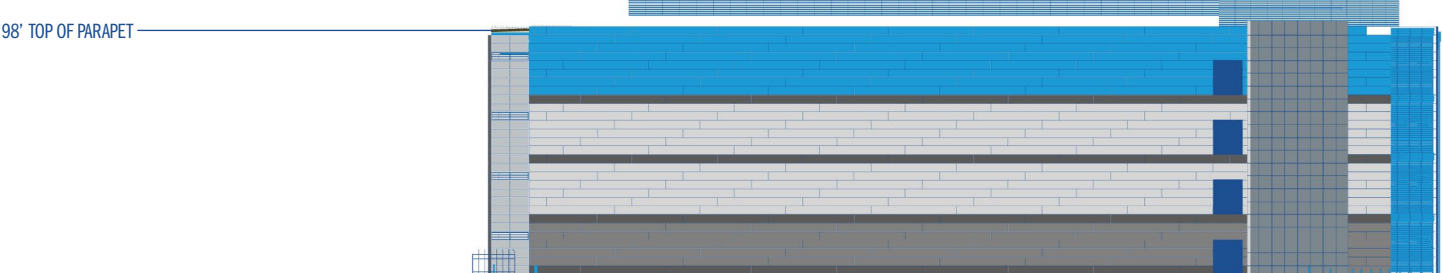
**WEST ELEVATION**



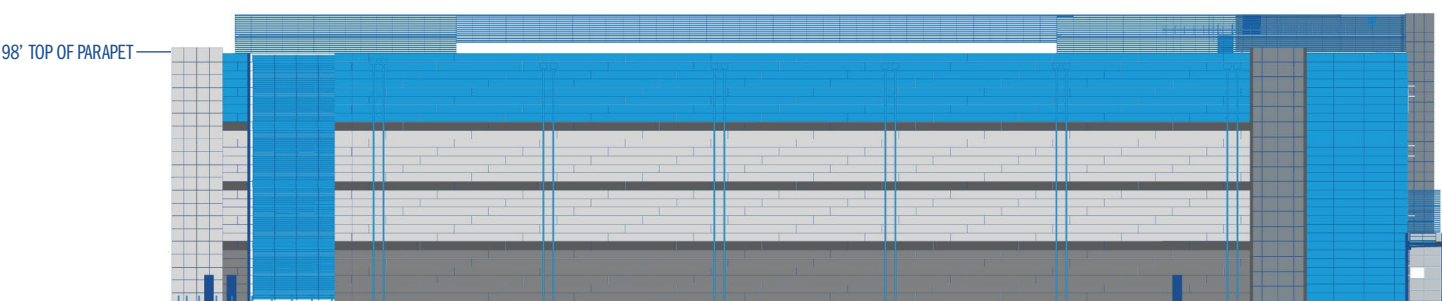
**SOUTH ELEVATION**



**EAST ELEVATION**



**NORTH ELEVATION**



## CAPACITY

**Total Facility Footprint**

- 560,440 SQ FT

**Total Acres**

- 9 Acres

**Total Capacity**

- 48MW (36MW critical and 12MW of lab space)

**Number of Data Halls**

- 8 data halls

**Data Hall Size**

- Each 6MW data hall is 24,000 SQ FT

**Solution Options**

- POWERSTACK™: Immediately available shell capacity
- READYSTACK™: RackReady® data halls

## LOW-COST, FLEXIBLE COOLING &amp; EFFICIENCY

**Cooling**

- N+1 345-ton air-cooled chillers per lineup with VSD and quick restart

**Density**

- Deployments supported in 250 w/ft

## SAFETY &amp; SECURITY

**Security**

- 24 x 7 on-site security personnel
- Dual-factor biometric access
- CCTV coverage with 93-day retention
- Secure vehicle gates with badge access
- Perimeter fencing

**Fire Protection**

- Dual smoke detection including VESDA
- Dual-interlock pre-action sprinkler system
- Located in a FEMA-designated area of minimal flood hazard

## POWER &amp; RELIABILITY

**Utility Service**

- Multiple utility feeds

**Electrical Redundancy (Generators / UPS)**

- N+1 Block Redundant

**Fuel Storage**

- Minimum 24 hours of operation

**PDU**

- Client-dedicated PDU distribution

**BMS Controls**

- Client access to BMS portal

## CONNECTIVITY

**Diversity**

- 2 Meet-Me-Rooms with diverse fiber entrances

**Carrier Availability**

- Access to 15 networks
- Dark fiber available

## AMENITIES

**Work Space**

- 63,000 SQ FT of office space across 6 stories
- 24,250 SQ FT of storage space across 6 stories
- Conference and break rooms
- Complimentary WiFi
- Shared and dedicated office space

**Storage**

- Shared and private storage/staging

**Client Conveniences**

- Electric Vehicle (EV) charging stations
- Showers
- Bicycle storage
- Multi-bay secure loading dock

## CERTIFICATIONS SUPPORTED



STACK provides digital infrastructure to scale the world's most innovative companies. With a client-first approach, STACK delivers a comprehensive suite of campus, build-to-suit, colocation, and powered shell solutions in the Americas, EMEA and APAC regions. With robust existing and flexible expansion capacity in the leading availability zones, STACK offers the scale and geographic reach that rapidly growing hyperscale and enterprise companies need.

The world runs on data. [And data runs on STACK.](#)



**METRO NETWORKS**

- CenturyLink Metro

■ CenturyLink Metro Leased

■ Electric Lightwave

■ ExteNet Systems

■ Hudson Fiber
- Integra

■ Level3 (TWT)

■ Level3 Metro

■ Point to Point

■ Silicon Valley Fiber
- Telia Carrier

■ TPx Communication

■ Vast Networks

■ Windstream

■ Zayo Metro

